



# I N N O M A S T Innomast – Linear Actuator Mast

## INNOMAST 5 or 8 Metre Linear Actuator Mast

Like most great innovative designs, Innomast was conceptualised to solve the operational problems our customers had with availability and functionality of masts sourced within Australia and Internationally. Innomast has been branded as a separate product but is made at the same facility as all other RPS products.

The Innomast design focused on solving the issue of mast headstock access height. The mast headstock when stowed is only 300mm higher than the A Frame of a trailer or vehicle. The headstock is accessible from the ground allowing the user to access all mounted communications equipment easily. The mast allows for easy and safe extension of the headstock from the ground without the need to access the unit.

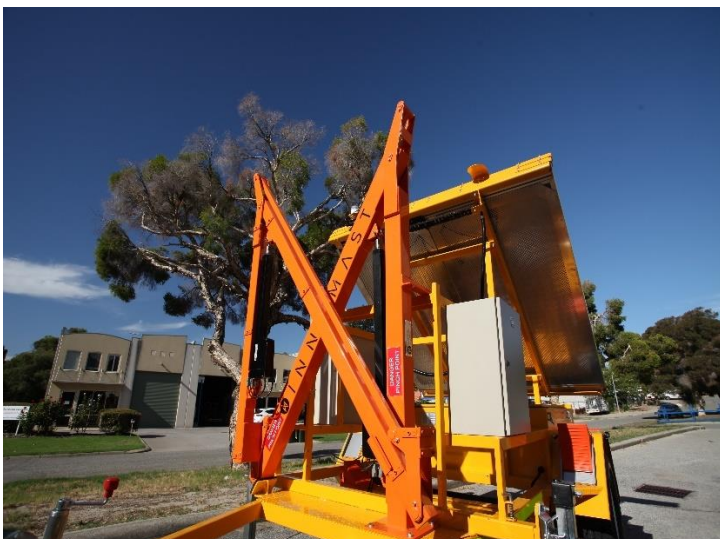
Unlike most stow away mast, the headstock of the mast always remains vertical with an electric rotational headstock optional for alignment while the mast has been deployed.

Our MM-08035- LA linear actuator mast has a headload of up to 35kg and stands at 5 or 8 metres to the top of the mast and up to 10m to the top of the headstock. It offers smooth deployment and retraction with compact stowage and can withstand wind speeds of up to 100km/h with a 0.8m<sup>2</sup> sail area. Powder-coated for weather protection, in a high visibility orange.

This mast attaches easily via 4 bolts to any deployment requirement and can mount to any equipment. UV protected conduit also protects all cables running up the mast.

The MM-08035-LA linear actuator mast is powered via 12V DC and has one (5m mast) or two (8m mast) linear actuators.

If you require further information or would like to consider other mast options, please visit our Innomast website – [www.innomast.com.au](http://www.innomast.com.au)



<b>Headload:</b>	35Kg
<b>Height:</b>	5-8 metre
<b>Weight:</b>	140kg
<b>Retracted Height (m)</b>	1.98
<b>Retracted Width (m)</b>	1.30
<b>Wind speed:</b>	Up to 100km/h
<b>Colour:</b>	Orange (Other colours are available on request)
<b>DC Input:</b>	12V
<b>DC Current:</b>	17A
<b>Sail Area:</b>	0.8m <sup>2</sup>
<b>Mast type:</b>	Linear actuator
<b>Material:</b>	Mild Steel